



JDisc Discovery 5.0

Device History Add-On

Legal Notice

JDisc GmbH shall not be liable for errors contained herein or for incidental or consequential damages in connection with the furnishing, performance, or use of this material. The information herein is subject to change without notice and is provided "as is" without warranty of any kind. The entire risk arising from the use of this information remains with the user. In no event shall JDisc GmbH be liable for any direct, consequential, incidental, special, punitive, or other damages whatsoever (including - without limitation - damages for loss of business profits, business interruption or loss of business information), even if JDisc GmbH has been advised of the possibility of such damages. The foregoing shall apply regardless of negligence or any other fault on behalf of either party and regardless of whether such liability sounds in contract, negligence, tort, or any other theory of legal liability, and notwithstanding any failure of essential purpose of any limited remedy. The limited warranties for JDisc GmbH products are exclusively set forth in the documentation accompanying such products. Nothing herein should be construed as constituting a further or additional warranty.

Copyright

JDisc GmbH may hold patents or pending patent applications covering the subject matter of this document. The furnishing of this document does not imply any license for these patents. You can send license inquiries, in writing, to:

JDisc GmbH
Kuppinger Weg 25
D-71116 Gärtringen
Germany

This document is protected by copyright. All rights are reserved. No part of this document may be photocopied, reproduced, or translated to another language without prior written consent of JDisc GmbH.

All other registered trademarks are the property of their respective owners.

© Copyright JDisc GmbH, 2025.

Contents

1 Introduction.....	6
2 Device History.....	7
2.1 Concepts.....	7
2.2 Creating Snapshots Manually.....	8
2.3 Scheduling Snapshots.....	8
2.4 Viewing Snapshot Data.....	10
2.5 View Differences Between Snapshots.....	10
2.5.1 Select Snapshots to Compare.....	11
2.5.2 Comparing Scalar Reports.....	11
2.5.3 Comparing Tables.....	12
2.6 Managing Device Snapshots.....	12
2.6.1 Device Snapshots.....	12
2.6.2 Individual Device Snapshots.....	14
3 Open Source	16

1 Introduction

Tracking configuration changes is essential for delivering efficient support and help desk services to your customers or for finding the root cause of unexpected server problems in your data center. JDisc Discovery's Device History Add-On adds tracking of device configuration changes to JDisc Discovery and allows viewing of device configuration data at any given time.

2 Device History

The device history section explains how to create snapshots, view previous configurations, compare device data from two snapshots and manage snapshots.

2.1 Concepts

A snapshot includes device configuration and dependencies on other devices at a given time. Snapshots can be created manually from any device report or scheduled automatically.

Manually created snapshots include all selected devices. Scheduled snapshots include all devices belonging to the configured group and - depending on the settings in the discovery configuration dialog - also devices from all subgroups.

The device details dialog allows viewing of device data stored in snapshots and comparing the data of two snapshots.

2.2 Creating Snapshots Manually

To manually create a snapshot from within any device report, select one or multiple devices by using the context menu *History » Create Snapshot*.

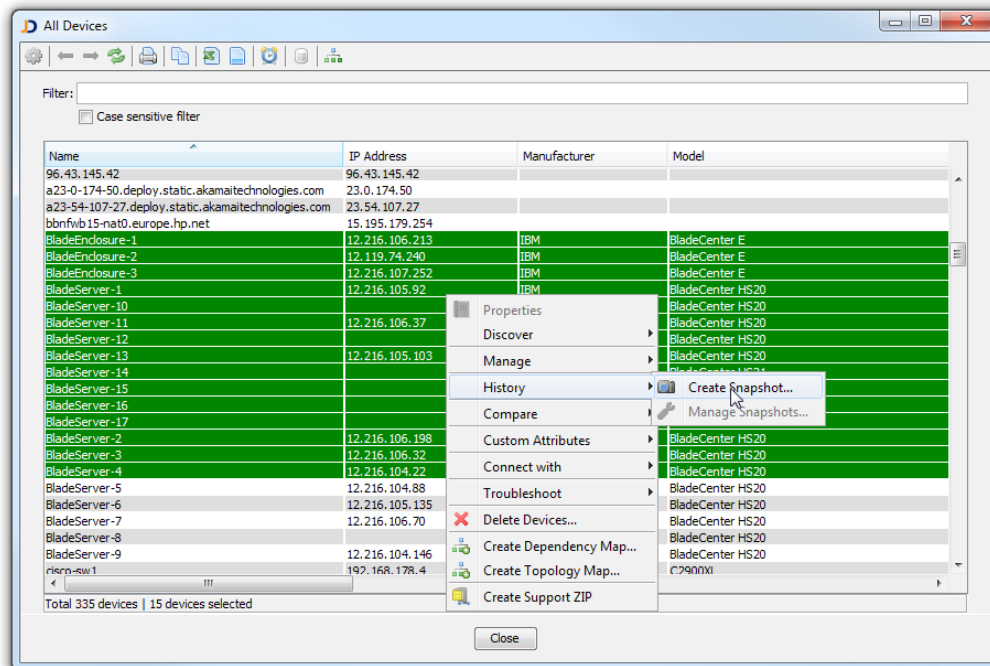


Fig: Context menu for creating a new snapshot

Add a comment to identify the snapshot.

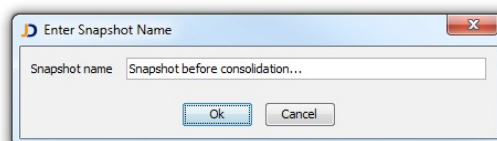


Fig: Entering a snapshot comment

JDisc Discovery creates a snapshot of the selected devices and stores the snapshot in the database.

2.3 Scheduling Snapshots

Scheduled snapshots allow tracking of configuration changes within your network. To

create a scheduled snapshot

- Open the discovery configuration dialog from the *Discovery » Configuration* menu
- Select the *Device History* tab within the *Scope* tab.
- Select a device group in the navigation panel and enable or disable the 'Include devices within subgroups' check-box to include or exclude devices in subgroups.

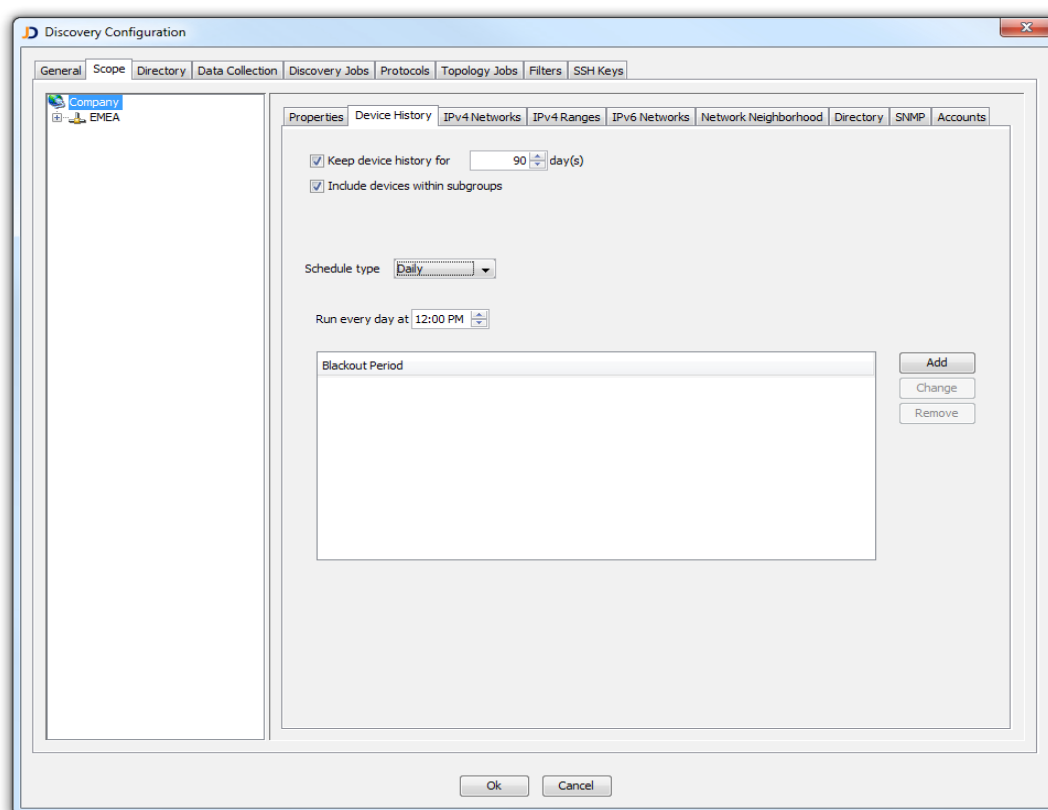


Fig: Configuring scheduled device history snapshots

The value in the 'Keep device history for <n> day(s)' field determines the maximum life cycle of device history snapshots. Device snapshots that have exceeded the configured life cycle will be deleted from the database if the check-box for this option is enabled.

Enable the 'Include devices within subgroups' option to include all devices in the snapshot that belong to subgroups of the selected group.




It is best practice to schedule snapshots at times when JDisc Discovery is idle (no discoveries, no scheduled backups).



Configure scheduled snapshots per device group as needed to cover different IP networks and ranges, Windows domains or

2.4 Viewing Snapshot Data

Click on the device history icon  from the *Device Details* dialog to display device history snapshots. Select a device history snapshot to view the device data at the time when the snapshot was created.

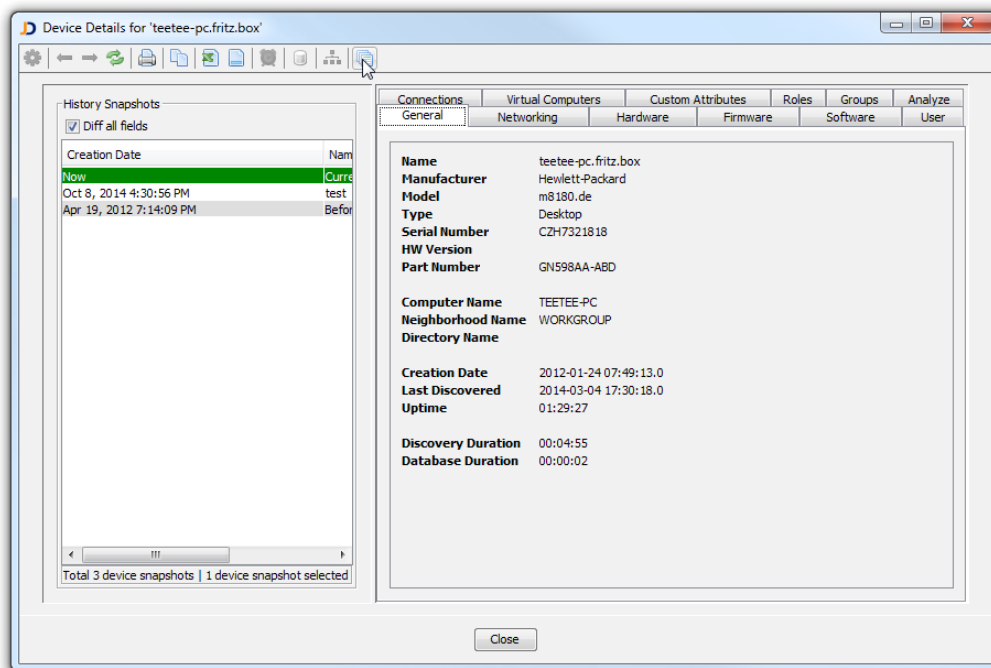



Fig: Viewing device snapshot data

2.5 View Differences Between Snapshots

Select two snapshots to switch the device details dialog into the difference mode. The difference mode highlights the changes between the primary snapshot (that you selected first) and the secondary snapshot (which you selected to compare against the primary snapshot). The dialog caption always displays the current selection.

2.5.1 Select Snapshots To Compare

Select two snapshots to create a comparison report. Select the device history icon  and select the two snapshots that you would like to compare. JDisc Discovery's user interface immediately changes into the comparison mode and highlights differences

with red and green color.

2.5.2 Comparing Scalar Reports

The figure below shows a comparison of a snapshot from the 17th of March with current data. Strikeout red colored text has been removed from the first snapshot and green colored text has been added in the second snapshot.

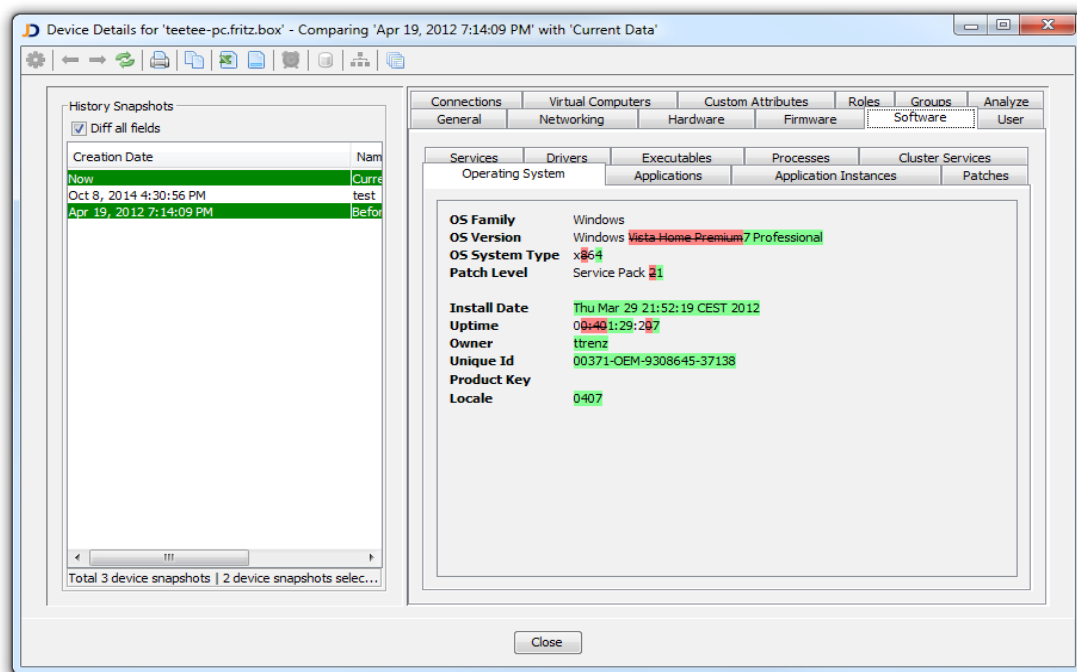


Fig: Difference report for the operating system tab

Select the *Diff all fields* check box within in the History Snapshots panel to compare all available fields including fields that periodically changes such as the system up-time or free disk space fields.

Deselect the *Diff all fields* check box to compare only fields that typically indicate a change in two snapshots.

2.5.3 Comparing Tables

When comparing table based reports, JDisc Discovery adds two columns at the beginning of the table to display the comparison status. JDisc Discovery displays

- identical rows using two check-marks
- missing rows in any of the two snapshot by omitting the check-mark in the respective columns.

- a red cross for rows that contain differences and highlights the cells that contain the differences using red background color.

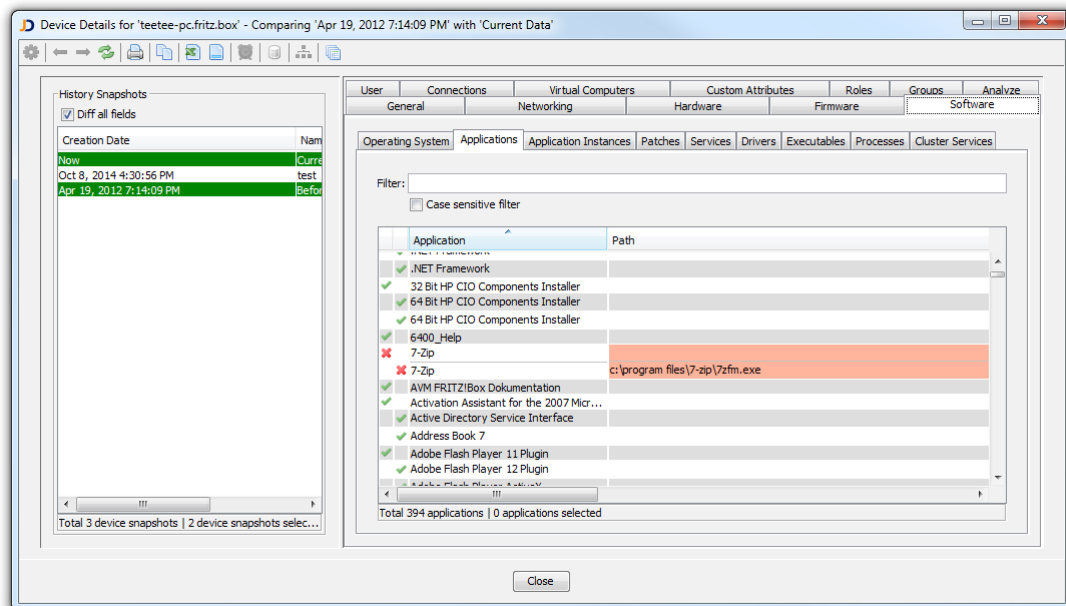


Fig: Difference of a table based report

2.6 Managing Device Snapshots

This section explains how to manage device snapshots.

2.6.1 Device Snapshots

A snapshot contains data for one or multiple devices. You can view existing snapshots from the *Devices » History Snapshots* menu.

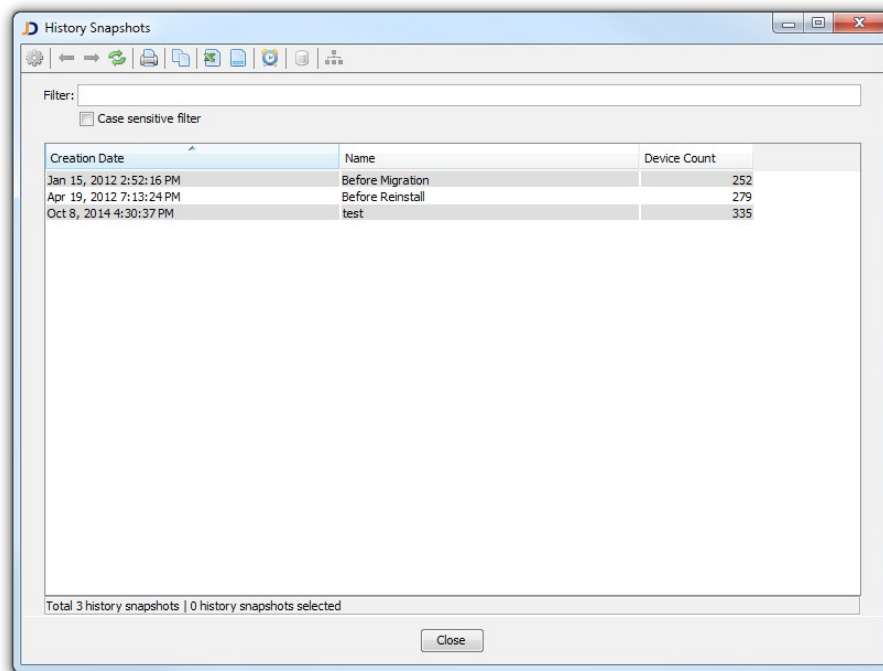


Fig: Device history snapshots

Open the context menu to delete selected snapshots or to view the devices included in selected snapshots.

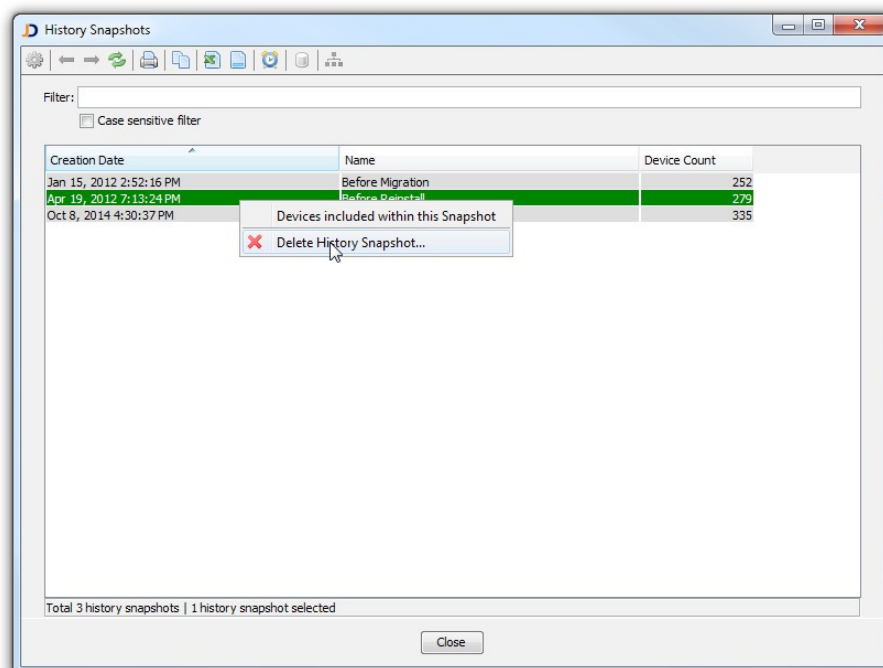


Fig: Deleting device history snapshots

When deleting a device history snapshot the data of all devices contained in the snapshot will also be deleted.

2.6.2 Individual Device Snapshots

In addition to deleting a device history snapshot including all contained information, you can also delete individual devices from a device history snapshot. To delete a device from a device history snapshot, select the device from any device report and open the context menu **Manage » History » Manage Snapshots**.

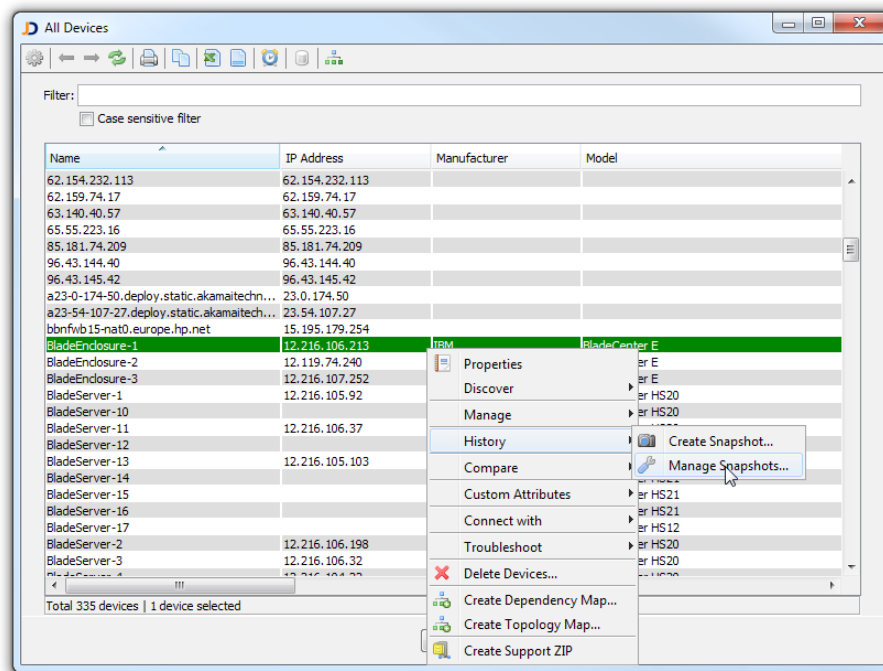


Fig: Managing a device's history

Select the snapshots you wish to delete from the *Device History* report and choose *Delete History Snapshot* from the context menu.

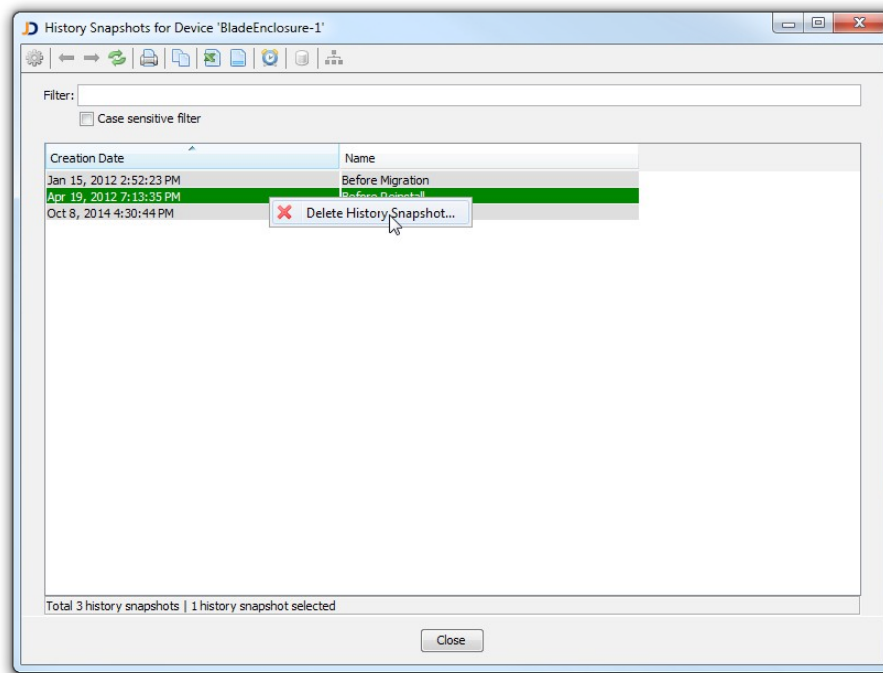


Fig: Deleting a snapshot of an individual device

3 Open Source

This software includes software developed by various open-source projects and organizations as listed below. The corresponding files and components are copyright to the corresponding organization or vendor and all rights reserved. The software files and components distributed under the open-source licenses are distributed on an "AS IS" basis, WITHOUT WARRANTY OF ANY KIND, either express or implied. See the license of the corresponding project for specific rights and limitations under the license. Depending on the license, any product derived from the products may not be called with the name of the project nor may the name of the project appear in their name, without prior written permission. For written permission, please contact the corresponding project owner by visiting the corresponding project home page as listed below.

All license files can be found in the installation directory 'Licenses'.

- This product includes software developed by the Apache Foundation (<http://www.apache.org>). These are 'Axis', 'Commons Collections', 'Commons Net', 'CXF', 'log4j', and 'POI', 'Drools', 'log4j'.
- This product includes the 'SBLIM' WBEM implementation (<http://sourceforge.net/projects/sblim/files/sblim-cim-client2/>)
- This product includes icons from 'FAMFAMFAM' icon gallery 'SILK' (<http://www.famfamfam.com/lab/icons/silk>).
- This product includes Kai Toedter's 'Jcalendar' (<http://www.toedter.com/en/jcalendar/index.html>).
- This product includes the JUNG layout library (<http://jung.sourceforge.net>).
- This product includes the COLT numeric library (<http://acs.lbl.gov/~hoschek/colt>).
- This product uses the Postgres database (<http://www.postgresql.org>).
- This product uses SNMP4J (<http://www.snmp4j.org>).
- This product uses the Ganymed SSH library (<http://www.ganymed.ethz.ch/ssh2>).
- This product uses the drools rule engine (<http://jboss.org/drools>).
- This product uses the janino compiler (<http://www.janino.net>).
- This product uses Jython (<http://www.jython.org/Project>).
- The product calls the dmidecode binary (<http://www.nongnu.org/dmidecode>).
Find the source code in the 'sources' directory.
- This product uses icons from 'Crystal Clear' (http://commons.wikimedia.org/wiki/Crystal_Clear).
- This product uses the 'PUTTY' ssh client.
- This product uses the dom4j library (<http://dom4j.sourceforge.net/dom4j-1.6.1>).
- This product uses the Jaxen library (<http://jaxen.org/>)

- This product uses the Jcalendar library (<http://toedter.com/jcalendar/>).
- This product uses the Jdom library (<http://www.jdom.org/>).
- This product uses the saxpath library (<http://www.saxpath.org/>).
- This product uses the miglayout library (<http://www.miglayout.com/>).
- This product uses the taskdialog library (<https://code.google.com/p/oxbow/>).
- This product uses the vjjava library (<http://vjjava.sourceforge.net/>).
- This product uses the dnsjava library (<http://www.dnsjava.org/>).
- This product uses the trove library (<http://trove.starlight-systems.com/>).